

"Bunting"

Commemorating Memorial Day. Introduced by ForeverQuilt 2015

General Directions:

Use scant quarter inch seam allowance throughout.

Reinforce all interior angles. Ex: point at the base of 2 star arms.

Snip to stitching line on all such angles.

Press seams open as you go.

Specific Directions:

Cut out pieces as indicated on the pattern piece.

Star Motif

Reinforce inside angles of the star. This is where the legs of the star radiate out from the body of the star. See pattern markings.

Sew the three triangles onto the star as follows:

1. Mark or stitch the intersection of the apex seams. See pattern.
2. Put a straight pin into the center of that intersection.
3. Now put the straight pin with the triangle attached into the reinforced intersection of the star. The triangle will be on the body of the star with the point of the triangle at the cut edge of the star. See Figure 1.
4. Make sure the legs of the triangle match up exactly to the arms of the star.
5. Put the needle of your sewing machine through this intersection. Lower the needle into the intersection. Remove the pin and stitch in place.
6. You now have a pivot point which will assist in attaching the triangle.
7. Rotate the triangle so that the one edge is parallel with the edge to be sewn. Sew edge in place. See Figure 2.
8. Now rotate the triangle so it matches up with the other star arm. The star will get bunched up because of the angles you are using.

Take care to pull the star fabric out of your way. Fold it so that it is flat and cannot interfere with stitching.

9. Put your needle in the same pivot point. Line up the fabric so it is straight and the sides end up at the same point at the end of the star arm. Be patient. No stress on this step.

10. Stitch to the end and turn.

11. Press seams apart.

12. This completed section will be referred to as the "Star Motif"

Top Banner and Side Panel

1. Stitch the angled edge to the top star arm using the pivot point method above. The banner is longer than the star arm and will be overlapped by the other banner. This insures that the star motif has center stage and won't be crowded by any edge finish you choose to apply.

2. Pivot the long edge to attach to the corresponding star arm. Stitch to point indicated on the pattern.

3. Attach the Side Panel to the "Star Motif" stopping a quarter inch from the bottom.

4. Attach the Side Panels to the Top Banners.

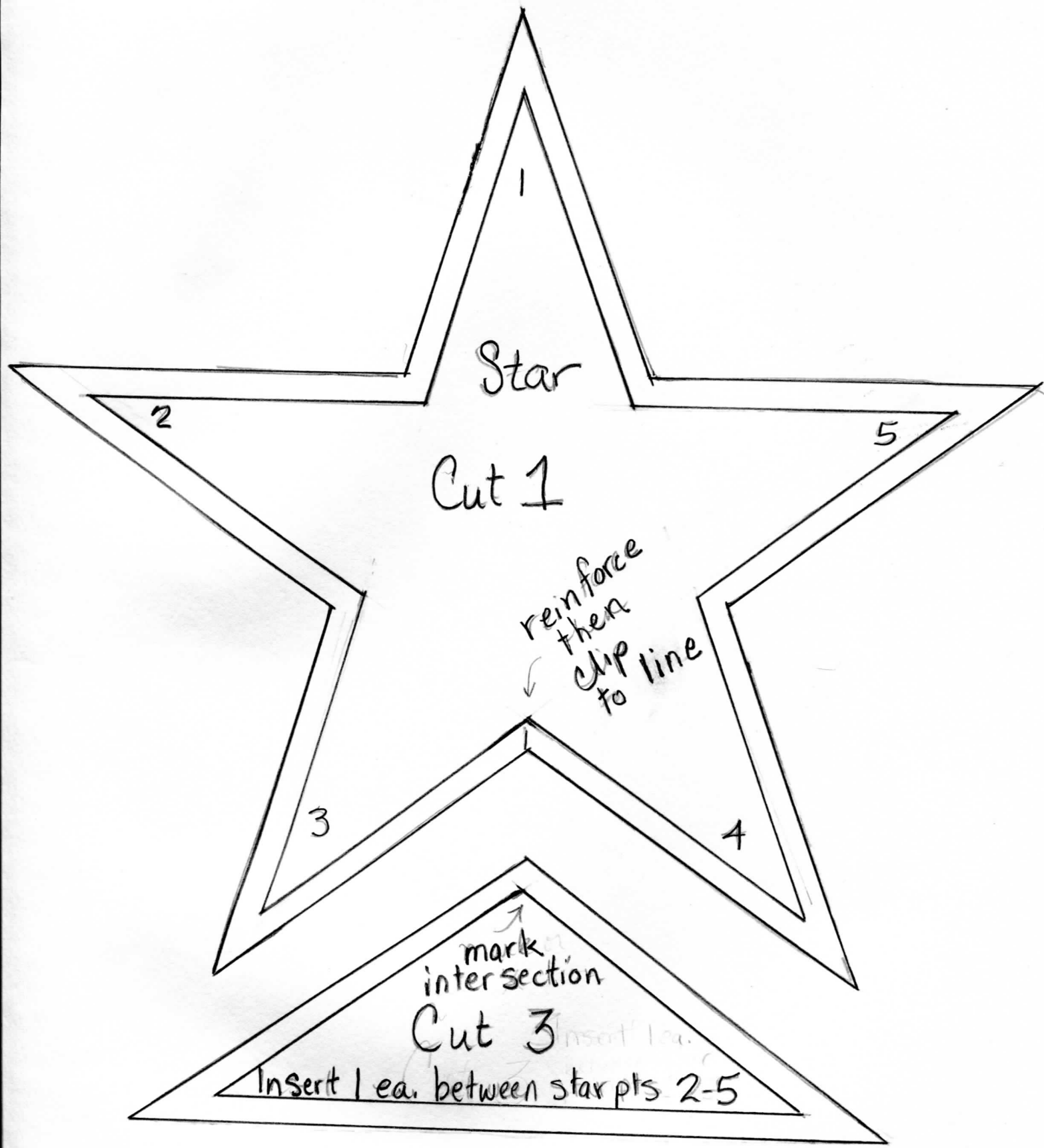
Bottom Panel

1. Attach Bottom Panel to Star Motif.

2. Match the angled edges of the Side Panel and Bottom Panel. Sew in place.

Your "Bunting" block is complete. It should measure 18" wide by 12" deep. This is a good size for a placemat, small accent pillow or wall hanging. It can also be repeated for a bedspread or comforter.

The "Bunting" pattern is the copyrighted by ForeverQuilt LLC, A Nebraska Corporation located at 715 Cedar View Circle, Bellevue, Nebraska 68123 It is offered for private use and cannot be transferred, sold, publish or otherwise used without the written consent of ForeverQuilt. Please contact us with any questions you may have. Our contact information is found on our web site: www.ForeverQuilt.com



Star

Cut 1

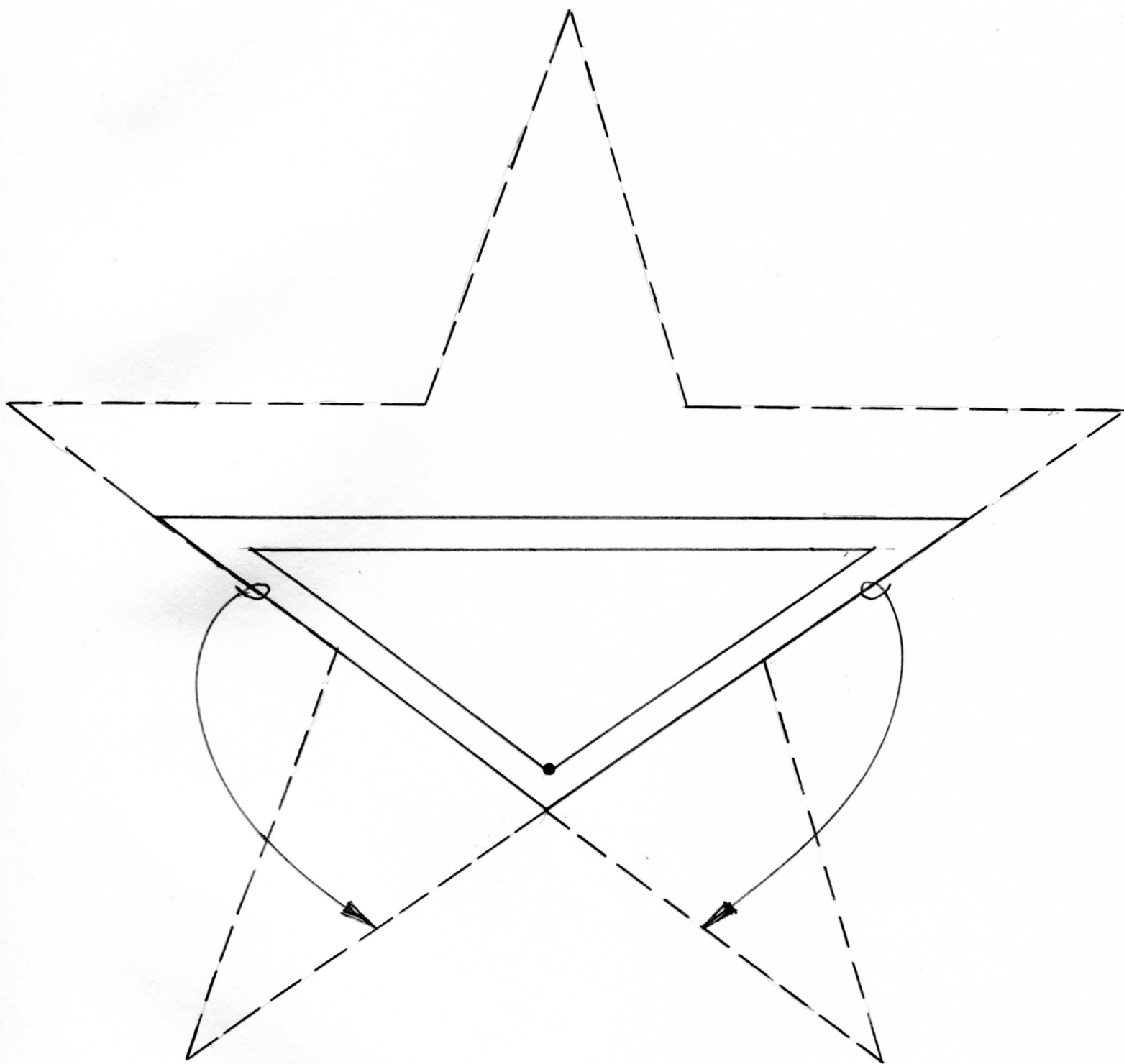
reinforce
then
clip
to line

mark
intersection

Cut 3

Insert 1 ea. between star pts 2-5

Figure 1



Triangle placed on Star
right sides together
Sew indicated edges together

Top Banner
Cut 2 mirrored

first
add this
edge →
of bottom
to arrow

then
add side panel to star motif
then sew side panel here

sew to here

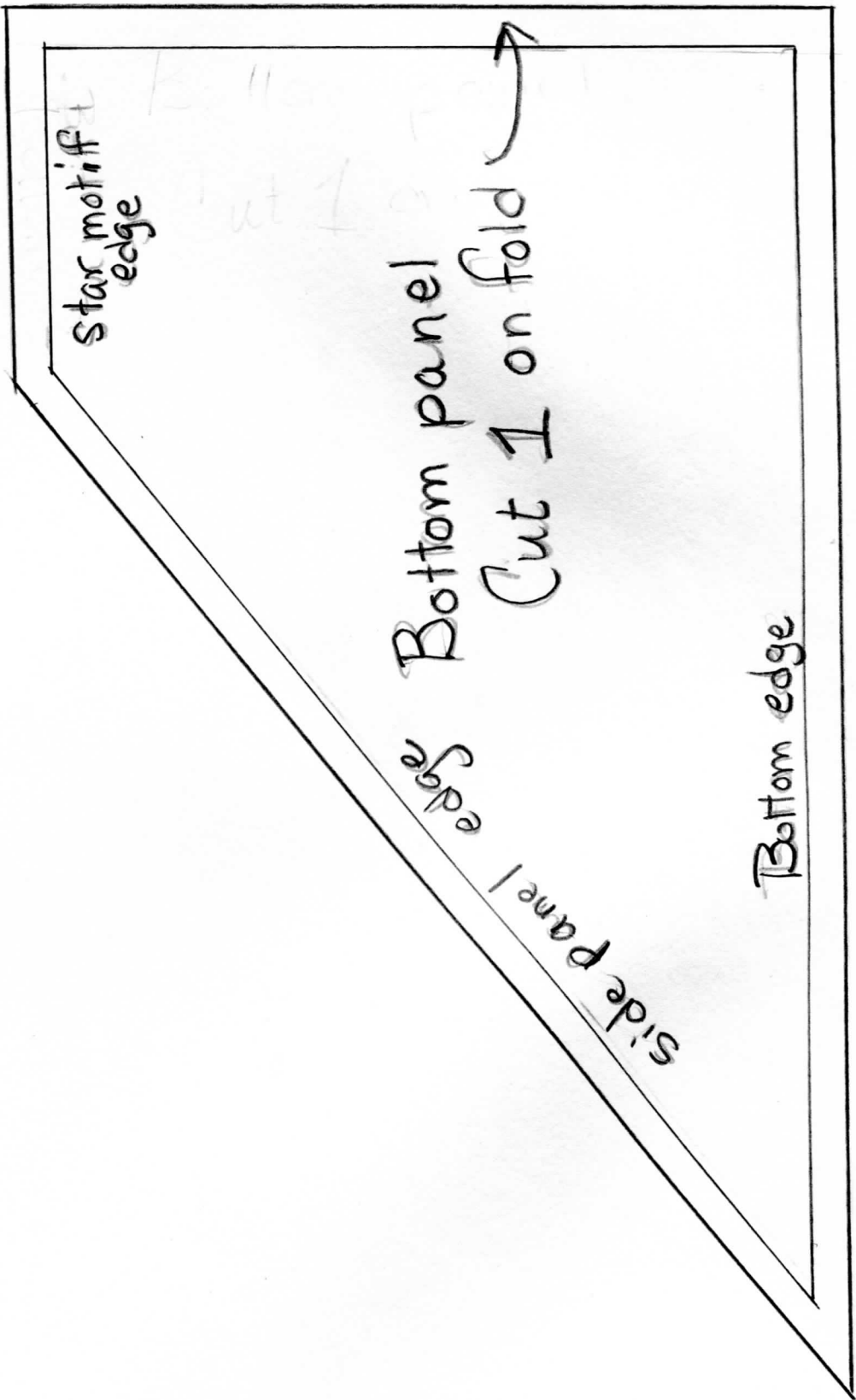
Top

Side Panel
Cut 2 mirrored

Place on
paper's
star motif
straight grain

Outside Edge

Bottom



Star motif edge

Bottom panel

Side panel edge

Bottom edge

Cut 1 on fold